

*SPECIMEN*

*Five delightful styles for the bricky penman*



# *Radcliffe Hand*

*A handwritten typeface by Zetafonts*



ZETAFONTS FOUNDRY

# Radcliffe Hand

**Name:** Radcliffe Hand  
**Classification:** Hand-drawn serif text font  
**Publisher:** Zetafonts  
**Designers:** Cosimo Lorenzo Pancini  
Giulia Ursenna Dorati  
Andrea Tartarelli

**Release year:** 2019  
**Styles:** 5 styles: regular, italic, bold, bold italic, script  
**Available:** [www.zetafonts.com/radcliffe-hand](http://www.zetafonts.com/radcliffe-hand)

## ABOUT

Radcliffe Hand is a typeface family designed by **Cosimo Lorenzo Pancini** with the help of **Giulia Ursenna Dorati**, re-inventing our **Radcliffe** family as a handwritten typeface.

Each glyph of the original typeface has been lovingly traced by hand, interpreting every design quality as a calligraphic quirk, thus allowing **Radcliffe Hand** to live in the middle ground between type and writing. Thanks to its wide & highly legible humanist skeleton, imbued with the dynamic qualities of handwriting, the typeface works both in display and text sizes, balancing expressivity and readability, and excelling in editorial and packaging uses where you want the text to keep display quality without becoming too hard to read.

**Radcliffe Hand** has been developed in four weights plus an extra connected cursive version, **Radcliffe Script**, that can be used together with **Radcliffe Hand** or with the standard Radcliffe and Radcliffe Casual to add an extra touch of handwriting to your designs. All the **Radcliffe Hand** typefaces include **over 400 glyphs** with extended latin languages coverage, open type number positional forms and a set of twenty hand-drawn arrows that can be accessed through discretionary ligatures allowing easy creation of "fake handwritten" side notes to your text.



STYLES

Radcliffe Hand Regular

**Radcliffe Hand Bold**

*Radcliffe Hand Italic*

***Radcliffe Hand Bold Italic***

*Radcliffe hand Script*

STENCIL

Aa



*Antifašistická Akcia!!*

The truth will set you free. But not until it is finished with you.

**Cantina Castelões™**

→ *The richest man is not he who has the most, but he who*

**\*Değıştirilemez Teklif\***

The sun machine is coming down, and we're gonna have a

*Sexårsåldern är en lagom*

Always forgive your enemies; nothing annoys them so much

**«Ert Þú Bókstafstrúar?»**

*“Those who believe in telekinetics, well, raise my hand.”*

*Reiser Til Jomfruøyene*

The cure for boredom is curiosity. There is no cure for it

**Unterstützung Gemäß**

⌘ *Ground Control to Major Tom. Can you hear me, Major* ⌘

*Uit Van Reënboognasie*

You miss 100 % of the shots you never take. Do you?



LÄBIVIIMISESSE(\*)

*To the man who only has a hammer, everything he encounters*

DOSTALI NAJĎALEJ

*Feed my will to feel this moment Urging me to cross the line*

PAŞALÂCUL BUDA !!

*Saturn ascends, the one, the ten. Ignorant to the damage...*

DE NEÎNDEPLINIRE

*We are what we repeatedly do; excellence, then, is not an act*

FRANĠISKU JĈEMPEL

*☞ We can be heroes, forever and ever What d'you say? ☞*

AZGARAD FETIŞISM?

*[...] I worry about being a success in a mediocre world (2)*

150 COPII FRUMOŞI

*We are choosing to be here right now hold on, stay inside*

¿ES INESCRUTABLE?

*I'd rather live with a good question than a bad answer.*



## TEXT PROOF

*Script 10 pt*

The so-called 'psychotically depressed' person who tries to kill herself doesn't do so out of quote 'hopelessness' or any abstract conviction that life's assets and debits do not square. And surely not because death seems suddenly appealing. The person in whom its invisible agony reaches a certain unendurable level will kill herself the same way a trapped person will eventually jump from the window of a burning high-rise. Make no mistake about people who leap from burning windows. Their terror of falling from a great height is still just as great as it would be for you or me standing speculatively at the same window just checking out the view; i.e. the fear of falling remains a constant. The variable here is the other terror, the fire's flames.

*Regular 20 pt*

The so-called 'psychotically depressed' person who tries to kill herself doesn't do so out of quote 'hopelessness' or any abstract

*Bold 20 pt*

**assets and debits do not square. And surely not because death seems suddenly appealing. The person in whom its invisible**

*Italic 20 pt*

*unendurable level will kill herself the same way a trapped person will eventually jump from the window of a burning high-rise*

*Bold Italic 20 pt*

***take about people who leap from burning windows. Their terror of falling from a great height is still just as great as it would***

*Script 20 pt*

*standing speculatively at the same window just checking out the view; i.e. the fear of falling remains a constant. The variable here is the*

*Regular pt 10*

① The Man Without Qualities (1930) - "A barometric low hung over the Atlantic. It moved eastward toward a high-pressure area over Russia without as yet showing any inclination to bypass this [...], Albert Musil

*Script pt 10*

② GRAVITY'S RAINBOW (1973) - "It has happened before, but there is nothing to compare it to now. It is too late. The Evacuation still proceeds, but it's all theatre. There are no lights inside the cars [...], Thomas Pynchon

*Italic pt 10*

③ ROBINSON CRUSOE (1719) - "I was born in the Year 1632, in the City of York, of a good Family, tho' not of that Country, my Father being a Foreigner of Bremen, who settled first at Hull [...], Daniel Defoe

*Bold pt 10*

④ IF ON A WINTER'S NIGHT A TRAVELER (1979) - "You are about to begin reading Italo Calvino's new novel, If on a winter's night a traveler., Italo Calvino



---

20pt / 24 — Mixed Weights

**Nero** (Latin: *Nero Claudius Caesar Augustus Germanicus*) **was the last Roman emperor of the Julio-Claudian dynasty.** He was born *Lucius Domitius Ahenobarbus* on 15 December 37 ad in **Antium**. Nero was adopted by his great-uncle **Claudius** and became his **heir and successor**. Nero's mother, **Agrippina the Younger**, was likely implicated in Claudius' death and Nero's nomination as emperor.

---

16pt / 20 — Mixed Weights

*During the early years of his reign*, Nero was content to be guided by his mother, his tutor **Lucius Annaeus Seneca** and his Praetorian prefect, **Sextus Afranius Burrus**. As time passed, he started to play a more active and independent role in government and foreign policy. During his reign, the redoubtable general **Corbulo** conducted a successful war and negotiated peace with the **Parthian Empire**. His general **Suetonius Paulinus** crushed a major revolt in Britain, led by the Iceni **Queen Boudica**. Nero focused much of his attention on diplomacy, trade and the cultural life of the empire, ordering theatres built and promoting athletic games.

---

12pt / 16 — Mixed Weights

**Nero's rule is usually associated with tyranny and extravagance.** Most Roman sources, such as **Suetonius** and **Cassius Dio**, offer overwhelmingly negative assessments of his personality and reign. **Tacitus** claims that *"the Roman people thought him compulsive and corrupt"*.

**Suetonius** tells that *"many Romans believed that the Great Fire of Rome was instigated by Nero to clear the way for his planned palatial complex, the Domus Aurea."*

According to **Tacitus** he was said to have seized Christians as scapegoats for the fire and burned them alive, seemingly motivated not by public justice but by personal cruelty. **Some modern historians question the reliability of the ancient sources on Nero's tyrannical acts.** A few sources paint Nero in a more favorable light. There is evidence of his popularity among the Roman commoners, especially in the eastern provinces of the Empire, where a popular legend arose that Nero had not died and would return.

---

10pt / 14 — Mixed Weights

Nero's father, **Domitius**, died in 40. A few years before his death, Domitius had been involved in a political scandal that, according to Malitz: *"could have cost him his life if Tiberius had not died in the year 37, since in the previous year, Nero's mother Agrippina had been caught up in a scandal of her own"*. Caligula's beloved sister **Drusilla** had recently died and Caligula began to feel threatened by his brother-in-law **Marcus Aemilius Lepidus**. Agrippina, suspected of adultery with her brother-in-law, was forced to carry the funerary urn after Lepidus' execution. Caligula then banished his two surviving sisters, Agrippina and Julia Livilla, to a remote island in the Mediterranean Sea. According to *The Oxford Encyclopedia of Ancient Greece and Rome*, Agrippina was exiled for plotting to overthrow Caligula.

---

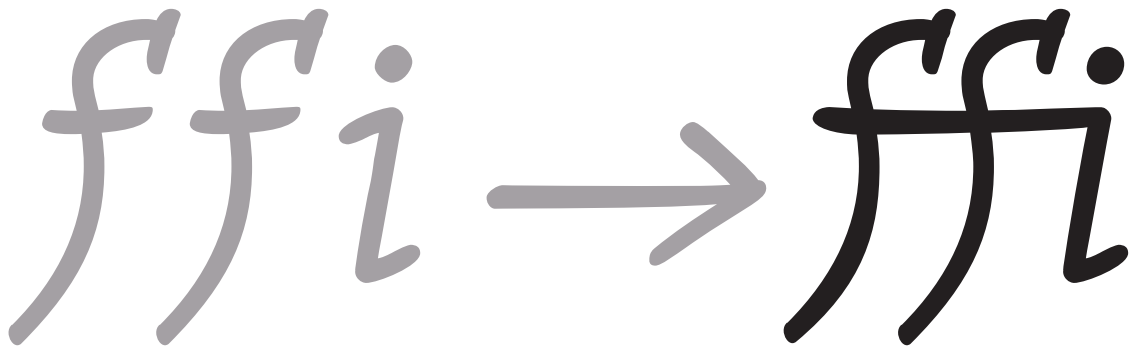
8pt / 12 — Mixed Weights

Caligula's reign lasted from 37 until 41. **He died from multiple stab wounds in January of 41** after being ambushed by his own Praetorian Guard on the Palatine Hill. Claudius succeeded Caligula as Emperor. Agrippina married Claudius in 49 ad and became his fourth wife. By February 49, she had persuaded Claudius to adopt her son Nero. After Nero's adoption, "Claudius" became part of his name: *Nero Claudius Caesar Drusus Germanicus*. Claudius had gold coins issued to mark the adoption. Classics professor Josiah Osgood has written that *"the coins, through their distribution and imagery alike, showed that a new Leader was in the making."* **David Shotter** noted that, despite events in Rome, Nero's step-brother Britannicus was more prominent in provincial coinages during the early 50s. The ancient biographer **Suetonius**, who was critical of Nero's ancestors, wrote that Augustus had reproached Nero's grandfather for his unseemly enjoyment of violent gladiator games. According to **Jürgen Malitz**, Suetonius tells that Nero's father was known to be *"irascible and brutal"*, and that both *"enjoyed chariot races and theater performances to a degree not befitting their position."*



STANDARD **ffi** LIGATURES

The **standard ligatures** are designed to correct awkward text combinations of letters, such as fi, ffi, ff. Such ligatures are applied by default in *Radcliffe Hand Italic* only.

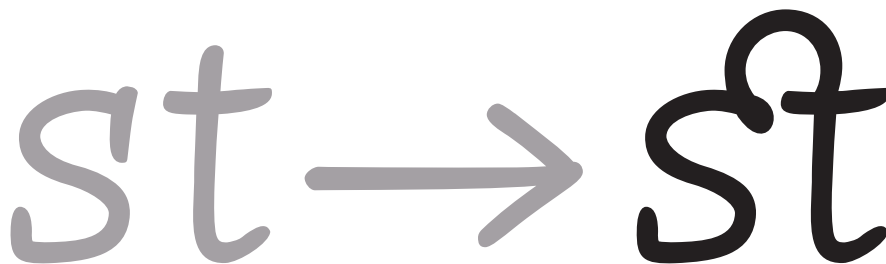


LIGATURE LIST

fi ff ffi

DISCRETIONARY **ct** LIGATURES

**Discretionary Ligatures** are ligatures applied at the user's discretion.



LIGATURE LIST

st ct sp





## CIRCULAR NUMBERS

The **Special Ligatures** offer you the possibility to get special symbols by using key combinations without glyph panel. These are activated enabling **Discretionary Ligatures**.

②

## CIRCULAR NUMBER

(1)(2)



① ②

## BLACK CIRCULAR NUMBER

((1))((2))



① ②

## LETTER COMBINATION

There are also **Special letter combinations** this solution offer you the possibility to get special symbols by using key combinations without glyph panel. These are activated enabling **Discretionary Ligatures**.

## NUMBER

[No.]



N°

## COPYRIGHT

(C)



©

## REGISTERED

(R)



®

## TRADEMARK

[TM]



TM

## LOVE SIGN

&lt;3



♥

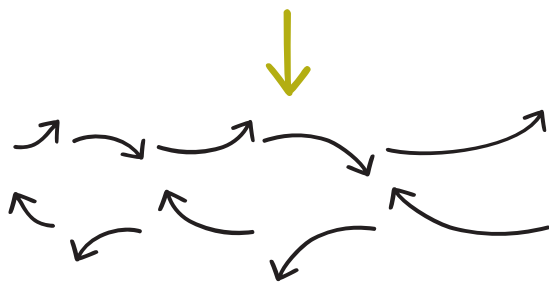


CREATING ARROWS

The **Special Ligatures** offer you the possibility to get special symbols by using key combinations without glyph panel. These are activated enabling **Discretionary Ligatures**.

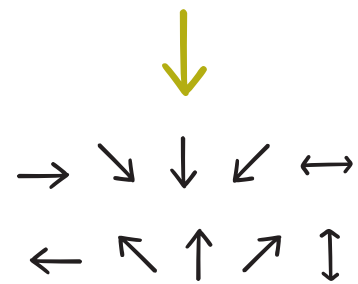
CIRCULAR ARROWS

<+ - - - or' - - - + >  
(FROM 2 TO FIVE -)



STRAIGHT ARROWS

<+ - / | + >



POSITIONING FIGURE/FRACTION

These various kind of figures are used for fractions, footnote references, chemical compounds, and as mathematical exponents.

FRACTION

12/23

SUBSCRIPT-INFERIOR

H<sub>2</sub>O

DENOMINATOR

D<sub>22</sub>

ORDINALS

12<sup>o</sup>

SUPERSCRIPT-SUPERIOR

X<sup>12</sup>

NUMERATOR

N<sup>12</sup>





NUMBERS

400+ chars  
70+ languages  
2 variants: roman, script

COMMON LANGUAGE

Afrikaans, Albanian, Asu, Azerbaijani, Basque, Bemba, Bena, Bosnian, Breton, Bulgarian, Catalan, Chiga, Colognian, Cornish, Croatian, Czech, Danish, Dutch, English, Esperanto, Estonian, Faroese, Filipino, Finnish, French, Friulian, Galician, Ganda, German, Gusii, Hungarian, Icelandic, Inari Sami, Indonesian, Irish, Italian, Jola-Fonyi, Kabuverdianu, Kalenjin, Kinyarwanda, Low German, Lower Sorbian, Luo, Luxembourgish, Luyia, Macedonian, Machame, Makhuwa-Meetto, Makonde, Malagasy, Malay, Maltese, Manx, Morisyen, North Ndebele, Northern Sami, Norwegian Bokmål, Norwegian Nynorsk, Nyankole, Oromo, Portuguese, Quechua, Romansh, Rombo, Rundi, Rwa, Samburu, Sango, Sangu, Scottish Gaelic, Sena, Serbian, Shambala, Shona, Slovak, Slovenian, Soga, Somali, Spanish, Swahili, Swedish, Swiss German, Taita, Teso, Turkish, Turkmen, Ukrainian, Upper Sorbian, Vunjo, Walser, Welsh, Western Frisian, Wolof, Zulu



Route of Franklin's arctic expedition 1845-47

This is over 1000 miles  
lost in this cold and deep  
place for monsters



## Quinoa Food & Co.

Healthy and Fresh

### Look for whole grains.

Foods, like brown rice, quinoa, and whole grain bread, are much healthier than overly processed grains and French fries

### Be choosy about protein.

Veggie burgers are convenient and ok in a pinch, but many contain ultra-processed forms of soy and over-the-top sodium levels.

### Scope out the produce.

Vegetarian doesn't equal healthy. Case in point:

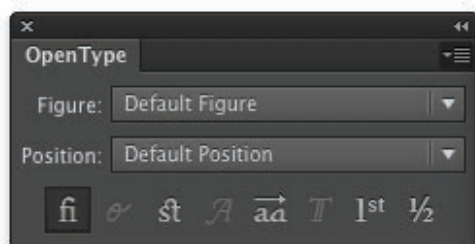
The quick brown fox jumps  
over the laziest dog in the quar  
thus becoming ipso facto a rec



## HOW TO USE FEATURES

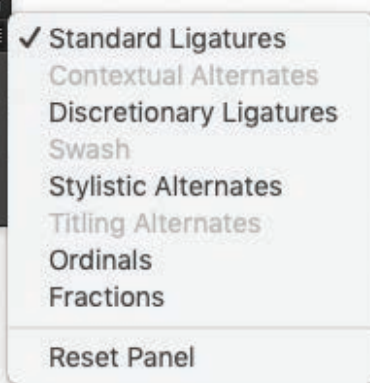
All Zetafonts typefaces feature extra glyphs and functions that are available with Open Type technology (works on Adobe software, Word, and newer Os). Open Type features

are activated in Illustrator, InDesign and Photoshop through multiple option checks in the Type → Open Type panel.



To activate Open Type panel select in the menu:

Window → Type → Opentype panel



The OpenType format makes it possible to incorporate typographic features, such as small caps, ligatures, old style numerals and lining numerals, all within one font file, thereby simplifying font management and usage.

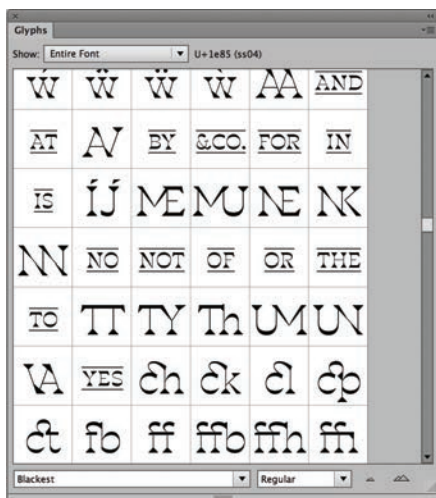
FOR MORE INFORMATION CHECK OUR FAQ PAGE:

<http://bit.ly/zetafaq>

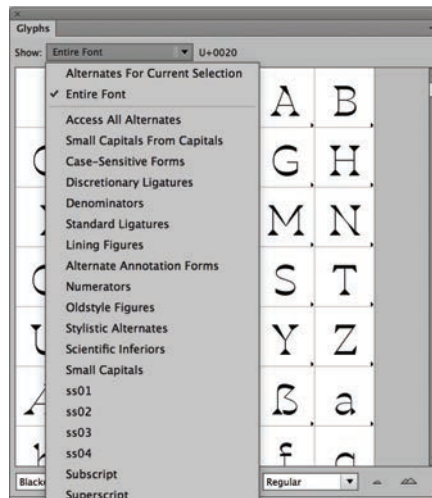
## USE SPECIAL FEATURES AND STYLE SETS

Illustrator's Glyphs panel provides quick access to a wide range of special characters. With the Type tool, click to place the inser-

tion point, then double-click the character you want to place in the text from the Glyphs panel.



To activate glyph panel go to:  
menu → window → type → glyph panel



You can select the stylistic set you want to be display



## AVAILABLE FORMATS AND INSTALLATION SPEC

In the package are available the most common file format for every purpose:

**TTF, OTF, EOT, WOFF, WOFF2**

### → Install on Windows 10

Once downloaded, right-click on the file, select *“Extract All”*. After extraction (or accessing the file at its downloaded destination), right-click on the file and select *“Install”*. Otherwise navigate to **Cortana’s search field** on the taskbar, type *“Control Panel”* and click the corresponding result. With the Control Panel open, navigate to *“Appearance and Personalization”* and click on *“Fonts”* in the main window.

Here you can **Drag and Drop** your files.

### → Install on Mac OS

Double click the unzipped font file and **Font Book** will open a preview of the font. Click *“Install Font”* at the bottom of the preview.

#### HOW TO GET THE FONT

In order to use our fonts in a commercial project, you need to pay a license fee that varies according to usage and number of users. Acquiring a license on our website [www.zetafonts.com](http://www.zetafonts.com) is the fastest way. You will be able to download the fonts immediately after the payment. Our website accepts payments with credit card or with PayPal account, both using PayPal POS that accepts all main credit cards. For more information about licensing, visit [www.zetafonts.com/licensing](http://www.zetafonts.com/licensing)

#### TRY BEFORE YOU BUY

Our fonts are free to try and for personal/non-commercial use. You can download the trial version in order to test the integration in your design by visiting the font page on [www.zetafonts.com](http://www.zetafonts.com)

#### CUSTOM FONT

Custom fonts is part of the services we offer as a type foundry. This include design completely new typefaces, modifications of existing ones, or creation of special language sets. For more information visit: [www.zetafonts.com/custom-fonts](http://www.zetafonts.com/custom-fonts)

#### WEB FONTS

All Zetafonts typefaces are available also as webfonts as self-hosting webfont licence. We provide the fonts as EOT, WOFF, WOFF2 formats.





Zetafonts is a Ligature srl division

LIGATURE  
SRL

Ligature srl  
via ghibellina 100  
50122 Florence  
Italy

[info@zetafonts.com](mailto:info@zetafonts.com)  
[www.zetafonts.com](http://www.zetafonts.com)

Zetafonts is an independent digital type foundry run by an Italian type designer Team and currently based in Florence. It has spent more than a decade designing typefaces for print, digital, environmental design, branding and corporation. Besides creating a wide range of high quality retail typefaces, Zetafonts also provides custom typeface design services for commercial and institutional clients.

© 2018 Ligature srl.  
All rights reserved.

ZETA FONTS.COM



ZETA FONTS  
FOUNDRY

CONTACT: [INFO@ZETA FONTS.COM](mailto:INFO@ZETA FONTS.COM)